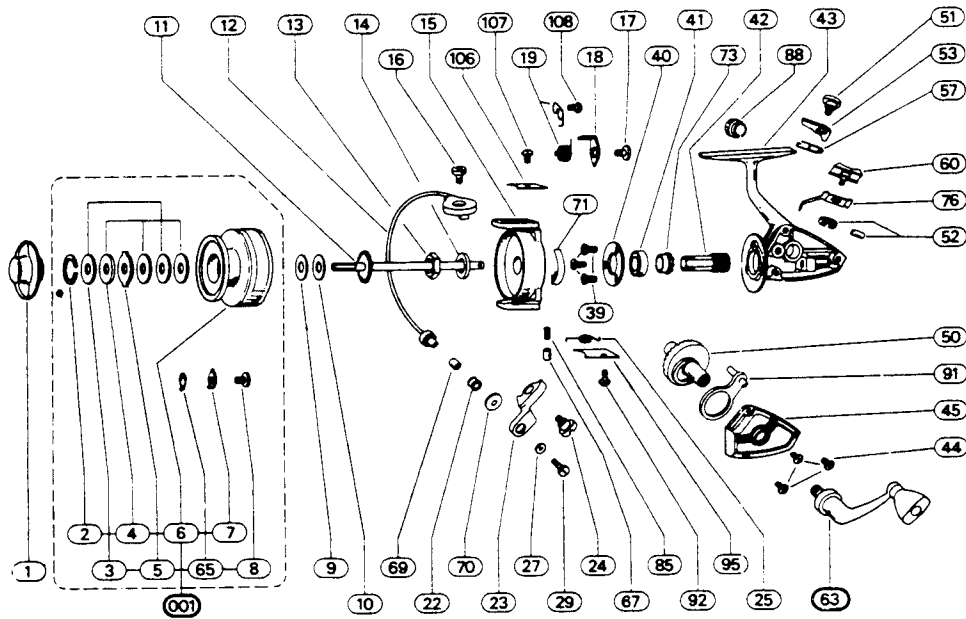


2200-040



Old model

REF. NO.	PART NO.	DESCRIPTION	REF. NO.	PART NO.	DESCRIPTION
001	79-66-0075-01	Spool Assy.	41	79-04-0027-01	Ball Bearing
1	79-40-0059-01	Drag Nut	42	79-46-0031-01	Pinion
2	79-54-0001-01	Retainer Ring	43	N/A	Frame Assy.
3	79-72-0121-01	Metal Washer	44	79-58-0150-01	Cover Plate Screw
4	79-72-0125-01	Fiber Washer	45	79-47-0097-01	Cover Plate
5	79-72-0129-01	Eared Washer	50	79-28-0041-01	Drive Gear
7	79-43-0002-01	Click Pawl	51	79-58-0012-01	N-R Pawl Screw
8	79-58-0001-01	Click Pawl Screw	52	79-54-0002-01	N-R Button Retainer
9	79-72-0150-01	Rear Washer	53	79-43-0041-01	N-R Pawl
10	79-72-0150-01	Rear Washer	57	79-67-0077-01	N-R Pawl Spring
11	79-60-0039-01	Main Shaft	60	79-10-0019-01	N-R Button
12	79-03-0034-01	Bail Wire Assy.	63	79-20-0058-01	Crank Assy.
13	79-40-0060-01	Pickup Nut	65	79-67-0003-01	Click Pawl Spring
14	79-72-0222-01	Pickup Washer	67	79-00-0001-01	Bail Stop
15	N/A	Pickup Housing	69	79-63-0001-01	Roller Sleeve
16	79-58-0147-01	Bail Screw	70	79-21-0001-01	Spacer Cup
17	79-58-0062-01	Trip Lever Screw	71	79-08-0007-01	Bail Brake
18	79-37-0039-01	Trip Lever	73	79-50-0015-01	Ratchet
19	79-67-0039-01	Trip Lever Spring	76	79-02-0008-01	Throwout Arm
22	79-57-0001-01	Line Roller	85	79-67-0004-01	Bail Stop Spring
23	79-07-0025-01	Bail Bracket	88	79-12-0008-01	Crank Cap
24	79-58-0147-01	Bail Bracket Screw	91	79-37-0038-01	Level Wind Lever
25	79-67-0042-01	Bail Spring	92	79-58-0149-01	Bail Spring Plate Screw
29	79-58-0050-01	Roller Screw	95	79-47-0098-01	Bail Spring Plate
39	79-58-0032-01	Bearing Retainer Screw	106	79-47-0096-01	Trip Lever Plate
40	79-53-0030-01	Bearing Retainer	107	79-58-0143-01	Trip Lever Plate Screw